

Rosetta Stone, Language Selection Best Practices

1. After establishing a log-in username and password on the intermediary log-in screen below, a learner must then select the language they choose to learn from the 'Choose Language to Learn' drop-down menu.

Rosetta Stone

EBSCO

English
Deutsch
English
Español
Français
Italiano
Português
中文
日本語

First time user?
1.) Enter your e-mail address.
2.) Choose a password (must be at least 6 letters plus at least one number)

Username

Password

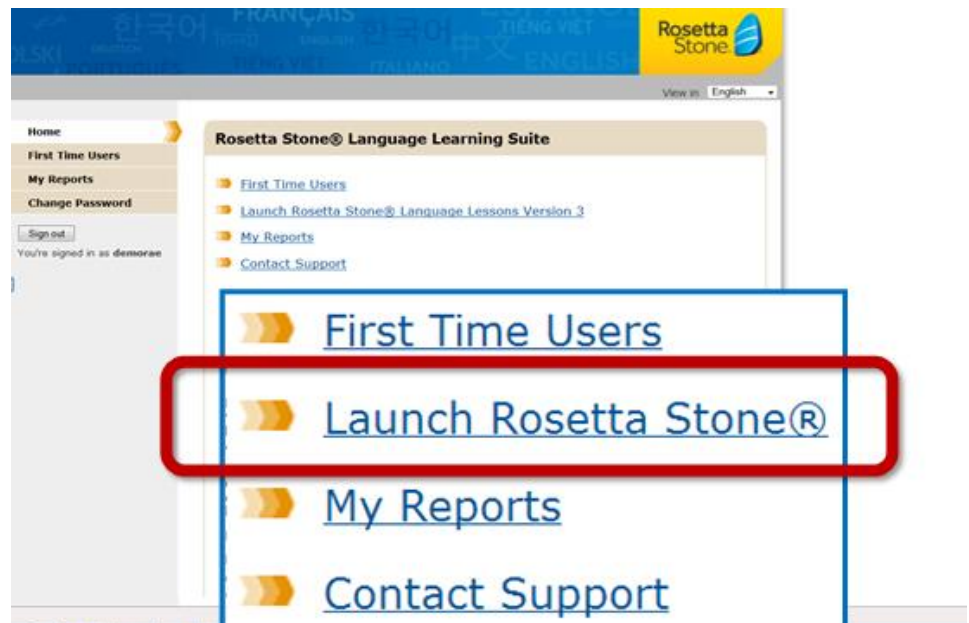
Choose Language to Learn

SIGN IN

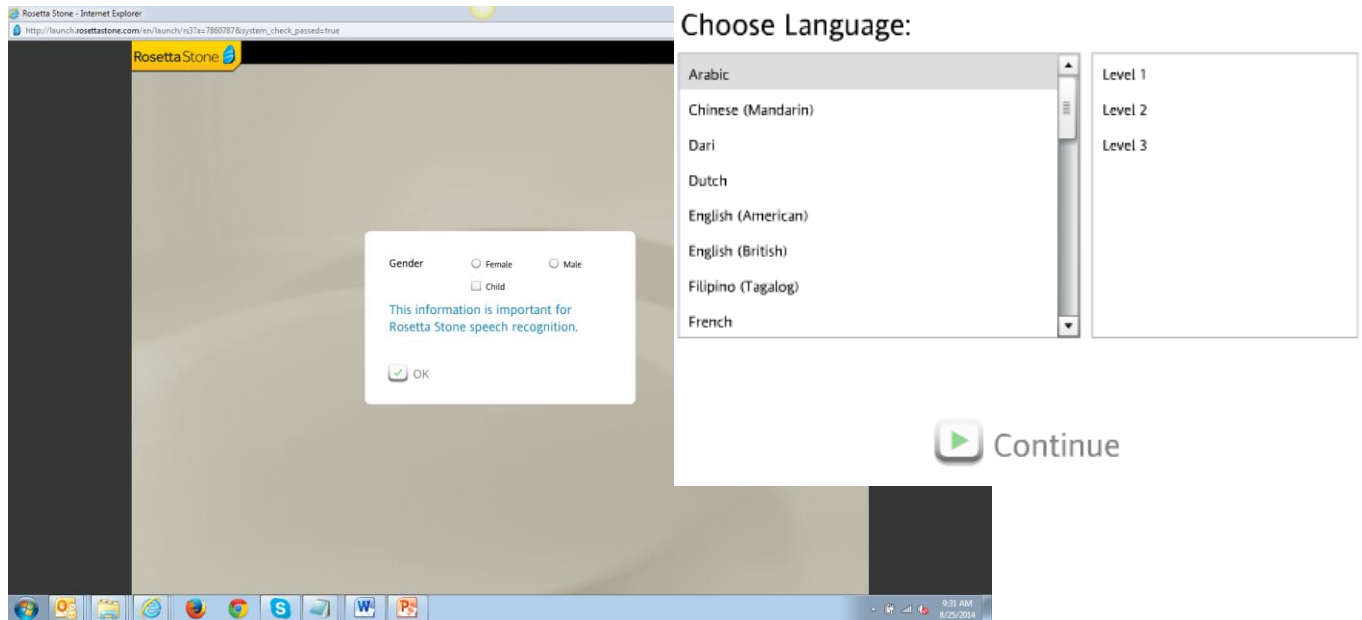
Forgot your password?

Rosetta Stone and EBSCO Information Services have combined to offer your library the Rosetta Stone Library Solution with 30 different languages available.

2. Next, the learner must select 'Launch Rosetta Stone Language Lessons Version 3' to begin the learning.



- After selecting gender per the speech recognition tool, the learner must reselect the language in which they chose to learn on the intermediary log-in screen. The learner must then specify the level in which they wish to begin.



- IF the learner selects any language other than the language they initially selected on the intermediary log-in screen, when they try to select their desired curriculum path, the following error occurs. The language selections MUST match on the both the intermediary log-in screen as well as within the program.

